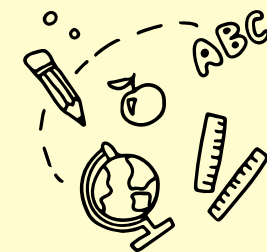




# Summary Inspection Report

## St. George's Preschool



### SETTING INFORMATION

<b>Inspection Dates</b>	March 17- 18, 2026		
<b>Name of Principal/Manager</b>	Ms. Magdalena Fernandes		
<b>Name of Owner</b>	St. George's Anglican Church		
<b>Age Range of Children</b>	2 years old to Compulsory School Age	<b>Number of Children on Roll</b>	107
<b>Number of Caymanian Children</b>	73	<b>Number of Children with ALSN &amp; SEND</b>	11
<b>Number of Licensed Teachers</b>	1	<b>Number of Other Staff</b>	15 Full Time & 1 Part Time

### WHAT THE SETTING DOES WELL

- Strong governance through an effective Advisory Board provides clear direction and oversight.
- Positive and well-established links with parents and the wider community, support children's learning and well-being.
- Clearly defined leadership roles, including a Special Educational Needs Coordinator (SENCO) and Teaching and Learning Lead, promote inclusive practice and ongoing improvement.

### OVERALL JUDGEMENT

**Satisfactory**

### AREAS FOR DEVELOPMENT

- To improve the quality of teaching, the centre should:
  - embed purposeful, play-based approaches consistently across all classes
  - strengthen the management of time and transitions between activities to maximise learning opportunities
  - ensure consistent and effective differentiation to meet the needs of all children across the centre.
- Explicitly teach self-regulation strategies to further support children's social and emotional development.

**Excellent**

Exceptionally high quality of performance or practice

**Good**

The expected level for every school in the Cayman Islands, both government and private

**Satisfactory**

The minimum level of quality required for the Cayman Islands. All key aspects of performance and practice in every school should meet or exceed this level.

**Weak**

Quality not yet at the level acceptable for schools in the Cayman Islands. Schools will be expected to take urgent measures to improve the quality of any aspect of their performance or practice judged at this level.



# INSPECTION FINDINGS

Quality Indicator		Previous Inspection Judgement	Current Inspection Judgement	Judgement Change
Cognitive development	1.1 Attainment	Satisfactory	Good	↑
	1.2 Progress	Satisfactory	Good	↑
Social Emotional development	1.1 Attainment	Satisfactory	Satisfactory	→
	1.2 Progress	Satisfactory	Satisfactory	→
Communication and Language development	1.1 Attainment	Good	Satisfactory	↓
	1.2 Progress	Good	Satisfactory	↓
Physical development	1.1 Attainment	Good	Good	→
	1.2 Progress	Good	Good	→
2.1 Social emotional learning		Satisfactory	Satisfactory	→
2.2 Understanding of and appreciation for culture, religion and the environment		Satisfactory	Satisfactory	→
3.1 Teaching		Satisfactory	Satisfactory	→
3.2 Learning		Satisfactory	Satisfactory	→
3.3 Observation, assessment and planning		Satisfactory	Satisfactory	→
4.1 Curriculum quality		Satisfactory	Good	↑
5.1 Health and safety		Satisfactory	Satisfactory	→
5.2 Support and guidance		Satisfactory	Satisfactory	→
6.1 Leadership		Satisfactory	Satisfactory	→
6.2 Self-evaluation and improvement planning		Satisfactory	Satisfactory	→
6.3 Links with parents and the community		Good	Good	→
6.4 Staffing and the learning environment		Satisfactory	Satisfactory	→



Click **HERE** to access the full inspection report for this school or visit [www.oes.gov.ky](http://www.oes.gov.ky).

