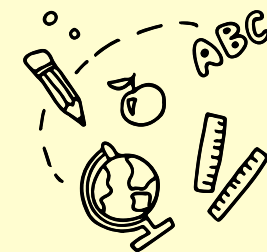




Summary Inspection Report

Little Trotters Farm & Nursery School



SETTING INFORMATION

Inspection Dates	March 10 - 11, 2026		
Name of Principal/Manager	Lesley Maddock		
Name of Owner	Joanna Boxall		
Age Range of Children	18 months to 4 years old	Number of Children on Roll	81
Number of Caymanian Children	40	Number of Children with ALSN & SEND	14
Number of Licensed Teachers	5	Number of Other Staff	12

WHAT THE SETTING DOES WELL

- The centre provides a highly positive and responsive learning environment where children feel valued, secure and motivated to participate in learning experiences.
- Learning spaces are well organised, inviting and thoughtfully resourced with a rich variety of high-quality materials that encourage exploration, creativity and independence, supporting strong progress in children's learning and development.
- A strong culture of respect, belonging and inclusion is evident throughout the centre, where diversity is recognised and celebrated and all children are supported to participate meaningfully in the programme.
- Staff respond sensitively to the needs of all children, using everyday and incidental interactions and experiences as opportunities to support children's communication, thinking, problem-solving and self-regulation.
- Staff work collaboratively with families and relevant specialists to ensure appropriate supports and strategies are in place to promote positive outcomes for each child.
- Leaders and the Advisory Board remain committed to the core values that underpin the centre's success, guiding the ongoing development of the centre while keeping these principles central to their decision-making.

OVERALL JUDGEMENT



Excellent

AREAS FOR DEVELOPMENT

- Formalise teacher performance management to include teacher observations and feedback.
- Ensure leaders and staff have intentional and purposeful opportunities to not only share their practice, but also to learn from other educational institutions.

Excellent

Exceptionally high quality of performance or practice

Good

The expected level for every school in the Cayman Islands, both government and private

Satisfactory

The minimum level of quality required for the Cayman Islands. All key aspects of performance and practice in every school should meet or exceed this level.

Weak

Quality not yet at the level acceptable for schools in the Cayman Islands. Schools will be expected to take urgent measures to improve the quality of any aspect of their performance or practice judged at this level.



INSPECTION FINDINGS

Quality Indicator		Previous Inspection Judgement	Current Inspection Judgement	Judgement Change
Cognitive development	1.1 Attainment	Excellent	Excellent	→
	1.2 Progress	Excellent	Excellent	→
Social Emotional development	1.1 Attainment	Excellent	Excellent	→
	1.2 Progress	Excellent	Excellent	→
Communication and Language development	1.1 Attainment	Excellent	Excellent	→
	1.2 Progress	Excellent	Excellent	→
Physical development	1.1 Attainment	Excellent	Excellent	→
	1.2 Progress	Excellent	Excellent	→
2.1 Social emotional learning		N/A	Excellent	N/A
2.2 Understanding of and appreciation for culture, religion and the environment		N/A	Excellent	N/A
3.1 Teaching		Excellent	Excellent	→
3.2 Learning		Excellent	Excellent	→
3.3 Observation, assessment and planning		Excellent	Excellent	→
4.1 Curriculum quality		Excellent	Excellent	→
5.1 Health and safety		Excellent	Excellent	→
5.2 Support and guidance		Excellent	Excellent	→
6.1 Leadership		Excellent	Excellent	→
6.2 Self-evaluation and improvement planning		Excellent	Excellent	→
6.3 Links with parents and the community		Excellent	Excellent	→
6.4 Staffing and the learning environment		Excellent	Excellent	→



Click **HERE** to access the full inspection report for this school or visit www.oes.gov.ky.

