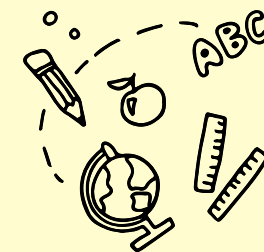




# Summary Inspection Report

## Creek and Spot Bay Primary School



### SCHOOL INFORMATION

Inspection Dates	November 24 - 26, 2025		
Principal	Mrs. Margaret Juman		
Age Range of Students	3 - 11 Years	Number of Students on Roll	105
Number of Caymanian Students	75	Number of Students with ALSN & SEND	23
Number of Teaching Staff	9	Number of Support Staff	9

### WHAT THE SCHOOL DOES WELL

- Students' progress in English, mathematics and science was good.
- In Early Years, children's achievement and progress in the four domains were good.
- A strong ethos of care and inclusion promoted positive relationships and good behaviour.
- The school provided a safe, inclusive, and well-kept environment that supported learning, with established routines that ensured calm transitions and readiness to learn.
- Students' civic and environmental understanding was excellent.
- The curriculum was wide-ranging and well balanced, providing rich and engaging learning experiences.
- The quality of support for students with Additional Learning Support Needs (ALSN), including those with special educational needs, was excellent, with highly effective practice evident in most areas. A qualified and dedicated core SEN team provided targeted support to students with additional needs.



### AREAS FOR DEVELOPMENT

- 1) Continue to raise attainment in core subjects by:
  - Consistently planning challenging tasks that deepen students' learning and enable a greater proportion of students to make better-than-expected progress;
  - Embedding responsive teaching strategies, adapting lessons in real time to address misconceptions, and ensuring feedback is consistently actionable, specific, and used effectively to improve learning outcomes;
  - Structuring regular opportunities for students to check their own learning and improve their work.
- 2) Reduce variability in the quality of teaching by enhancing instructional quality and strengthening teachers' practice in the gradual release methodology.
- 3) Further develop students' independent learning skills by providing more opportunities for them to engage with problems and tasks without immediate adult support, encouraging resilience, critical thinking, and problem-solving across subjects.

### OVERALL JUDGEMENT



**Good**

**Excellent**

Exceptionally high quality of performance or practice

**Good**

The expected level for every school in the Cayman Islands, both government and private

**Satisfactory**

The minimum level of quality required for the Cayman Islands. All key aspects of performance and practice in every school should meet or exceed this level.

**Weak**

Quality not yet at the level acceptable for schools in the Cayman Islands. Schools will be expected to take urgent measures to improve the quality of any aspect of their performance or practice judged at this level.



# INSPECTION FINDINGS

Quality Indicator		Early Childhood Judgement	Change	Quality Indicator		Primary Judgement	Change
Cognitive development	1.1 Attainment	Good	N/A	English	1.1 Attainment	Satisfactory	↑
	1.2 Progress	Good	N/A		1.2 Progress	Good	↑
Social Emotional development	1.1 Attainment	Good	N/A	Mathematics	1.1 Attainment	Satisfactory	↑
	1.2 Progress	Good	N/A		1.2 Progress	Good	↑
Communication and Language development	1.1 Attainment	Good	N/A	Science	1.1 Attainment	Satisfactory	→
	1.2 Progress	Good	N/A		1.2 Progress	Good	↑
Physical development	1.1 Attainment	Good	N/A				
	1.2 Progress	Good	N/A				

Quality Indicator	Early Childhood Judgement	Change	Primary Judgement	Change
2.1 Social emotional learning/Positive behaviour	Good	→	Good	↑
2.2 Civic and environmental understanding	Excellent	↑	Excellent	↑
3.1 Teaching	Good	→	Good	↑
3.2 Learning	Good	↑	Good	↑
3.3 Assessment	Good	↑	Good	↑
4.1 Curriculum quality	Good	→	Good	→
5.1 Health and safety	Good	→	Good	→
5.2 Support and guidance	Excellent	↑	Excellent	↑
5.3 Student Wellbeing	N/A	N/A	Good	N/A
6.1.1 Leadership	Whole School Judgement: Good		Change: ↑	
6.1.2 Leading and supporting emotional wellbeing	Whole School Judgement: Good		Change: N/A	
6.2 Self-evaluation and improvement planning	Whole School Judgement: Good		Change: ↑	
6.3 Links with parents and the community	Whole School Judgement: Excellent		Change: →	
6.4 Staffing and the learning environment	Whole School Judgement: Good		Change: ↑	

Click [HERE](#) to access the full inspection report for this school or visit [www.oes.gov.ky](http://www.oes.gov.ky).

