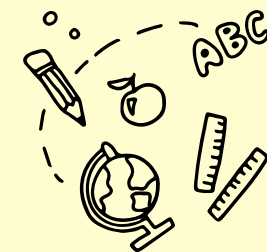




Summary Inspection Report

Prospect Primary School



SCHOOL INFORMATION

Inspection Dates	November 03 - 05, 2025		
Principal	Ms. Keisha-Ann Tingle, Acting		
Age Range of Students	4 - 11 Years	Number of Students on Roll	347
Number of Caymanian Students	330	Number of Students with ALSN & SEND	63
Number of Teaching Staff	19	Number of Support Staff	34

WHAT THE SCHOOL DOES WELL

- Good teaching in Early Years, responsive to the needs of the children, gets them off to a successful start in their education.
- Students show a high level of responsibility in caring for their school and creating a vibrant and attractive learning environment which is supported by good resources. Caymanian cultural life is at the heart of the school's curriculum and teaching.
- Comprehensive systems are in place for collecting, collating and sharing assessment information and using this to inform planning.
- The Acting Principal and senior leaders have generated a positive staff culture and created a shared ambition for the future of the school.
- The new senior leadership team has quickly and accurately evaluated the school's performance and created coherent plans for further improvement.



AREAS FOR DEVELOPMENT

Raise attainment and progress in English, maths and science by:

- requiring students to think more deeply about the language they hear, say, and write;
- creating more opportunities in maths lessons for students to talk together about their understanding of problems and strategies and requiring them to explain their thinking;
- giving students the freedom to design, carry out, and evaluate their own investigations in science to solve class questions.

Improve the consistency of classroom management and teaching quality in lessons by:

- keeping all students focused throughout lessons, especially when teachers are giving them guidance and asking questions;
- increasing the use of open questioning and tasks by teachers that require students to use and apply their increasing knowledge;
- setting time limits for the completion of tasks so that the pace of learning is maintained.

Identify and provide for the needs of all students in lessons by:

- adapting tasks and support for those students with identified needs who cannot access them independently.

OVERALL JUDGEMENT



Satisfactory

Excellent

Exceptionally high quality of performance or practice

Good

The expected level for every school in the Cayman Islands, both government and private

Satisfactory

The minimum level of quality required for the Cayman Islands. All key aspects of performance and practice in every school should meet or exceed this level.

Weak

Quality not yet at the level acceptable for schools in the Cayman Islands. Schools will be expected to take urgent measures to improve the quality of any aspect of their performance or practice judged at this level.



INSPECTION FINDINGS

Quality Indicator		Early Childhood Judgement	Change	Quality Indicator		Primary Judgement	Change
Cognitive development	1.1 Attainment	Good	↑	English	1.1 Attainment	Satisfactory	→
	1.2 Progress	Good	↑		1.2 Progress	Satisfactory	→
Social Emotional development	1.1 Attainment	Good	↑	Mathematics	1.1 Attainment	Satisfactory	→
	1.2 Progress	Good	↑		1.2 Progress	Satisfactory	→
Communication and Language development	1.1 Attainment	Good	↑	Science	1.1 Attainment	Satisfactory	→
	1.2 Progress	Good	↑		1.2 Progress	Satisfactory	→
Physical development	1.1 Attainment	Good	↑				
	1.2 Progress	Good	↑				

Quality Indicator	Early Childhood Judgement	Change	Primary Judgement	Change
2.1 Social emotional learning/Positive behaviour	Good	→	Good	→
2.2 Civic and environmental understanding	Excellent	↑	Excellent	↑
3.1 Teaching	Good	↑	Satisfactory	→
3.2 Learning	Good	↑	Satisfactory	→
3.3 Assessment	Good	↑	Good	↑
4.1 Curriculum quality	Good	→	Good	→
5.1 Health and safety	Satisfactory	→	Satisfactory	→
5.2 Support and guidance	Satisfactory	→	Satisfactory	→
5.3 Student Wellbeing	N/A	N/A	Satisfactory	N/A
6.1.1 Leadership	Whole School Judgement: Good		Change:	↑
6.1.2 Leading and supporting emotional wellbeing	Whole School Judgement: Satisfactory		Change:	N/A
6.2 Self-evaluation and improvement planning	Whole School Judgement: Good		Change:	↑
6.3 Links with parents and the community	Whole School Judgement: Good		Change:	→
6.4 Staffing and the learning environment	Whole School Judgement: Good		Change:	↑



Click [HERE](#) to access the full inspection report for this school or visit www.oes.gov.ky.

