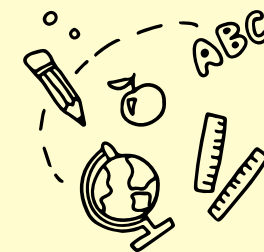




Office of Education
Standards
Cayman Islands Government

Summary Inspection Report

West End Primary School



SCHOOL INFORMATION

Inspection Dates	October 29 - 31, 2025		
Principal	Mrs. Susan Aaron-Abel		
Age Range of Students	4 - 11 Years	Number of Students on Roll	70
Number of Caymanian Students	57	Number of Students with ALSN & SEND	24
Number of Teaching Staff	10	Number of Support Staff	17

WHAT THE SCHOOL DOES WELL

- Children's social and physical development in the Early Years was judged as good.
- Leaders promote positive behaviours for learning and students respect rules and display self-regulation in almost all classes.
- Consistent and effective assessment processes enable teachers to understand students' strengths and weaknesses and the majority of teachers adapt learning to meet their needs.
- Tailor made support and interventions enable students with ALSN to make effective progress.
- The curriculum has improved significantly through digital literacy, emotional wellbeing and the promotion of Caymanian heritage.



AREAS FOR DEVELOPMENT

Build upon work already started to support those students identified as emergent readers in Reception so that they rapidly catch up and develop their readiness for compulsory education, by:

- continuing to refine early assessment processes to identify gaps in phonological awareness and pre-reading skills.
- ensuring targeted interventions, such as structured phonics and oral language enrichment, are closely monitored for impact.

Raise attainment in English and mathematics in school-based assessments and external tests by

- ensuring that the quality of teaching in English and mathematics in Key Stage 1 matches the quality of that seen in upper Key Stage 2.
- using assessment data to identify and address persistent areas of weakness across year groups.
- accelerating progress, particularly of the most able students, so that they reach their full potential.
- improving the frequency of learning activities which develop students' higher order and critical thinking.

Increase the proportion of good and better teaching in mathematics, English and other subjects by:

- Providing more targeted professional development that focuses on subject knowledge and pedagogy.

OVERALL JUDGEMENT



Satisfactory

Excellent

Exceptionally high quality of performance or practice

Good

The expected level for every school in the Cayman Islands, both government and private

Satisfactory

The minimum level of quality required for the Cayman Islands. All key aspects of performance and practice in every school should meet or exceed this level.

Weak

Quality not yet at the level acceptable for schools in the Cayman Islands. Schools will be expected to take urgent measures to improve the quality of any aspect of their performance or practice judged at this level.



INSPECTION FINDINGS

Quality Indicator		Early Childhood Judgement	Change	Quality Indicator		Primary Judgement	Change
Cognitive development	1.1 Attainment	Good	N/A	English	1.1 Attainment	Weak	→
	1.2 Progress	Good	N/A		1.2 Progress	Satisfactory	→
Social Emotional development	1.1 Attainment	Good	N/A	Mathematics	1.1 Attainment	Weak	→
	1.2 Progress	Good	N/A		1.2 Progress	Satisfactory	→
Communication and Language development	1.1 Attainment	Satisfactory	N/A	Science	1.1 Attainment	Satisfactory	→
	1.2 Progress	Good	N/A		1.2 Progress	Satisfactory	→
Physical development	1.1 Attainment	Good	N/A		1.1 Attainment	Satisfactory	→
	1.2 Progress	Good	N/A		1.2 Progress	Satisfactory	→

Quality Indicator	Early Childhood Judgement	Change	Primary Judgement	Change
2.1 Social emotional learning/Positive behaviour	Good	→	Good	↑
2.2 Civic and environmental understanding	Good	→	Good	→
3.1 Teaching	Good	→	Satisfactory	→
3.2 Learning	Good	→	Satisfactory	→
3.3 Assessment	Good	↑	Good	↑
4.1 Curriculum quality	Good	→	Good	→
5.1 Health and safety	Good	→	Good	→
5.2 Support and guidance	Good	→	Good	→
5.3 Student Wellbeing	N/A	N/A	Good	N/A
6.1.1 Leadership	Whole School Judgement: Good		Change: ↑	
6.1.2 Leading and supporting emotional wellbeing	Whole School Judgement: Good		Change: N/A	
6.2 Self-evaluation and improvement planning	Whole School Judgement: Good		Change: →	
6.3 Links with parents and the community	Whole School Judgement: Good		Change: →	
6.4 Staffing and the learning environment	Whole School Judgement: Good		Change: ↑	

Click [HERE](#) to access the full inspection report for this school or visit www.oes.gov.ky.

