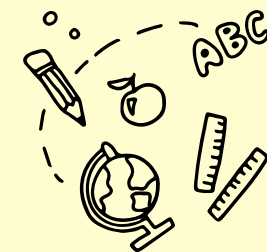




# Summary Inspection Report

## First Baptist Christian School



### SCHOOL INFORMATION

Inspection Dates	October 29 - 31, 2025		
Principal	Mrs. Janet Durksen		
Age Range of Students	2 - 14 Years	Number of Students on Roll	192
Number of Caymanian Students	95	Number of Students with ALSN & SEND	25
Number of Teaching Staff	19	Number of Support Staff	17



### WHAT THE SCHOOL DOES WELL

- Students achieved good outcomes in mathematics and English, and their progress and achievement in science were judged excellent.
- The school demonstrated strategic leadership and vision through its clearly articulated mission, which effectively guided a dual focus on academic priorities and the promotion of Christian values.
- Leaders maintained effective distributed leadership, with clearly defined roles and responsibilities that enhanced both operational efficiency and instructional oversight.
- Teachers ensured curriculum alignment and delivery by providing appropriately challenging and engaging learning experiences across both core and other subjects.
- The school has cultivated a supportive and inclusive ethos, celebrating diversity and fostering a strong sense of belonging among students and staff.
- The school's responsive self-evaluation and improvement planning processes enabled leaders to monitor progress, address inspection recommendations, and drive continuous improvement



### AREAS FOR DEVELOPMENT

#### Strengthen Teaching and Assessment Practices through:

- the implementation of a structured observation-feedback-coaching cycle to improve instructional quality;
- using assessment data more systematically to inform planning and personalise learning;
- the provision of training for teachers on effective questioning techniques to enhance student's thinking and depth of understanding.

#### Enhance Curriculum-Linked Learning Environments to:

- enrich classroom walls with student work, anchor charts, and word walls;
- ensure consistency and purposeful use of visual resources across phases.

#### Broaden Curriculum Enrichment and Aspirational Learning by:

- expanding career-linked learning opportunities through community partnerships and parental expertise;
- integrating real-world applications to deepen student engagement and relevance.

#### Formalise Strategic Planning for Well-Being to:

- develop comprehensive policies for mental health and emotional well-being.
- embed well-being into school improvement planning and review processes.

### OVERALL JUDGEMENT



**Good**

#### Excellent

Exceptionally high quality of performance or practice

#### Good

The expected level for every school in the Cayman Islands, both government and private

#### Satisfactory

The minimum level of quality required for the Cayman Islands. All key aspects of performance and practice in every school should meet or exceed this level.

#### Weak

Quality not yet at the level acceptable for schools in the Cayman Islands. Schools will be expected to take urgent measures to improve the quality of any aspect of their performance or practice judged at this level.



# INSPECTION FINDINGS

Quality Indicator		Early Childhood Judgement	Change	Quality Indicator		Elementary Judgement	Change	Middle Judgement	Change
Cognitive development	1.1 Attainment	Good	N/A	English	1.1 Attainment	Good	→	Good	→
	1.2 Progress	Good	N/A		1.2 Progress	Good	→	Good	→
Social Emotional development	1.1 Attainment	Good	N/A	Mathematics	1.1 Attainment	Good	→	Good	→
	1.2 Progress	Good	N/A		1.2 Progress	Good	→	Good	↑
Communication and Language development	1.1 Attainment	Good	N/A	Science	1.1 Attainment	Excellent	↑	Excellent	↑
	1.2 Progress	Good	N/A		1.2 Progress	Excellent	↑	Excellent	↑
Physical development	1.1 Attainment	Good	N/A						
	1.2 Progress	Good	N/A						

Quality Indicator	Early Childhood Judgement	Change	Elementary Judgement	Change	Middle Judgement	Change
2.1 Social emotional learning/Positive behaviour	Good	→	Good	→	Good	→
2.2 Civic and environmental understanding	Excellent	↑	Excellent	↑	Excellent	↑
3.1 Teaching	Good	↑	Good	→	Good	→
3.2 Learning	Good	↑	Good	→	Good	→
3.3 Assessment	Good	↑	Good	→	Good	↑
4.1 Curriculum quality	Good	→	Good	→	Good	↑
5.1 Health and safety	Excellent	↑	Excellent	↑	Excellent	↑
5.2 Support and guidance	Good	→	Good	→	Good	→
5.3 Student Wellbeing	Good	N/A	Good	N/A	Good	N/A
6.1.1 Leadership	Whole School Judgement: Good			Change:	→	
6.1.2 Leading and supporting emotional wellbeing	Whole School Judgement: Good			Change:	N/A	
6.2 Self-evaluation and improvement planning	Whole School Judgement: Good			Change:	→	
6.3 Links with parents and the community	Whole School Judgement: Excellent			Change:	↑	
6.4 Staffing and the learning environment	Whole School Judgement: Good			Change:	↑	



Click **[HERE](#)** to access the full inspection report for this school or visit [www.oes.gov.ky](http://www.oes.gov.ky).

