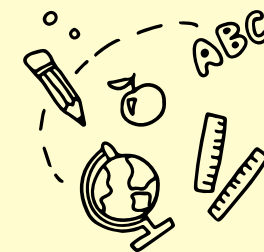




Summary Inspection Report

Clifton Hunter High School



SCHOOL INFORMATION

Inspection Dates	03 to 06 November, 2025		
Principal	Dr. Villence Buchanan		
Age Range of Students	10 -17 Years	Number of Students on Roll	848
Number of Caymanian Students	733	Number of Students with ALSN & SEND	154
Number of Teaching Staff	78	Number of Support Staff	18

WHAT THE SCHOOL DOES WELL

- The Principal demonstrated strong leadership across the entire school community. She supported and motivated staff and together with the other leaders provided the drive and the momentum needed to improve student outcomes.
- Senior leaders and staff had developed excellent links with parents, local businesses and a range of local services to support students' learning.
- Teachers motivated, supported and encouraged students to gain good exit qualifications especially in English and science at Year 11.
- The school provided a rich, wide-ranging curriculum that met successfully the learning needs of the highest attaining students and those that preferred a more practical skills-based course.
- The school effectively promoted student wellbeing and emphasised the personal and social development of all students.

OVERALL JUDGEMENT



Good

Excellent

Exceptionally high quality of performance or practice

Good

The expected level for every school in the Cayman Islands, both government and private

Satisfactory

The minimum level of quality required for the Cayman Islands. All key aspects of performance and practice in every school should meet or exceed this level.

Weak

Quality not yet at the level acceptable for schools in the Cayman Islands. Schools will be expected to take urgent measures to improve the quality of any aspect of their performance or practice judged at this level.

AREAS FOR DEVELOPMENT

- Improve students' progress and attainment in mathematics by:
 - Maintaining consistently high-quality teaching based on the best practice in the department;
 - Providing end of unit assessments with follow up actions to address gaps in learning.
- Promote students' critical thinking skills more effectively in all subjects.
- Improve the progress of students with additional learning support needs in lessons by adapting resources and tasks.
- Provide additional science laboratories to enable students to learn from experimental work and additional basic learning resources to enhance learning across the school.



INSPECTION FINDINGS

Quality Indicator		Judgement	Change
English	1.1 Attainment	Good	↑
	1.2 Progress	Good	↑
Mathematics	1.1 Attainment	Satisfactory	↑
	1.2 Progress	Satisfactory	→
Science	1.1 Attainment	Good	↑
	1.2 Progress	Good	↑
2.1 Positive behaviour for good learning		Good	→
2.2 Civic and environmental understanding		Good	→
3.1 Teaching		Good	↑
3.2 Learning		Good	↑
3.3 Assessment		Good	↑
4.1 Curriculum quality		Good	→
5.1 Health and safety		Good	→
5.2 Support and guidance		Good	→
5.3 Student Wellbeing		Good	N/A
6.1.1 Leadership		Good	↑
6.1.2 Leading and supporting emotional wellbeing		Good	N/A
6.2 Self-evaluation and improvement planning		Good	↑
6.3 Links with parents and the community		Excellent	↑
6.4 Staffing and the learning environment		Good	→



Click **HERE** to access the full inspection report for this school or visit www.oes.gov.ky

