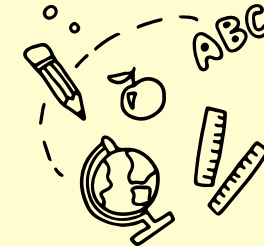




Office of Education
Standards
Cayman Islands Government

Summary Inspection Report

Sprogs Garden Playschool



SETTING INFORMATION

Inspection Dates	June 10 - 11, 2025		
Name of Principal/Manager	Ms. Emily Harris		
Name of Owner	Ms. Carolyn Chaloner		
Age Range of Children	1 to 4 Years	Number of Children on Roll	69
Number of Caymanian Children	27	Number of Children with ALSN & SEND	16
Number of Licensed Teachers	4	Number of Other Staff	9

WHAT THE SETTING DOES WELL

- The preschool is inclusive and embraces diversity, providing a welcoming and supportive environment for all children.
- Learning areas are clearly defined and thoughtfully structured to nurture children's curiosity, creativity, imagination, and love of exploration.
- Children's achievement and progress in social emotional learning, physical development and communication was excellent; whilst achievement and progress in the Cognitive domain was good.
- Children experienced a broad and balanced curriculum which promoted an appropriate progression of skills across all developmental domains allowing children to explore, discover, and develop through meaningful, hands-on experiences as they engaged in purposeful work cycles.
- Health and safety arrangements were robust, with a strong culture of safety and safeguarding firmly embedded throughout the preschool.
- The leadership team demonstrated an ethos of exceptional professionalism and partnership and inclusion practices were exemplary.

OVERALL JUDGEMENT



Excellent

AREAS FOR DEVELOPMENT

1. Further strengthen moderation practices to ensure greater consistency and accuracy in assessment judgments, supporting reliable evaluations of children's progress and learning outcomes.

Excellent

Exceptionally high quality of performance or practice

Good

The expected level for every school in the Cayman Islands, both government and private

Satisfactory

The minimum level of quality required for the Cayman Islands. All key aspects of performance and practice in every school should meet or exceed this level.

Weak

Quality not yet at the level acceptable for schools in the Cayman Islands. Schools will be expected to take urgent measures to improve the quality of any aspect of their performance or practice judged at this level.



INSPECTION FINDINGS

Quality Indicator		Previous Inspection Judgement	Current Inspection Judgement	Judgement Change
Cognitive development	1.1 Attainment	N/A	Good	N/A
	1.2 Progress	N/A	Good	N/A
Social Emotional development	1.1 Attainment	N/A	Excellent	N/A
	1.2 Progress	N/A	Excellent	N/A
Communication and Language development	1.1 Attainment	N/A	Excellent	N/A
	1.2 Progress	N/A	Excellent	N/A
Physical development	1.1 Attainment	N/A	Excellent	N/A
	1.2 Progress	N/A	Excellent	N/A
2.1 Social emotional learning		N/A	Excellent	N/A
2.2 Understanding of and appreciation for culture, religion and the environment		N/A	Excellent	N/A
3.1 Teaching		Good	Excellent	↑
3.2 Learning		Excellent	Excellent	→
3.3 Observation, assessment and planning		Satisfactory	Good	↑
4.1 Curriculum quality		Good	Excellent	↑
5.1 Health and safety		Satisfactory	Excellent	↑
5.2 Support and guidance		Good	Excellent	↑
6.1 Leadership		Good	Excellent	↑
6.2 Self-evaluation and improvement planning		Good	Excellent	↑
6.3 Links with parents and the community		Excellent	Excellent	→
6.4 Staffing and the learning environment		Excellent	Excellent	→



Click **HERE** to access the full inspection report for this school or visit www.oes.gov.ky.

