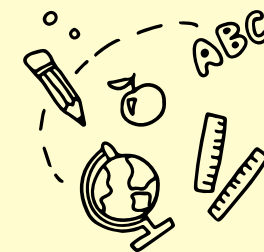




Office of Education
Standards
Cayman Islands Government

Summary Inspection Report

Theoline L. McCoy Primary School



SCHOOL INFORMATION

Inspection Dates	6 May to 8 May 2025		
Principal	Ms. Kimberly Watler		
Age Range of Students	4 - 11 Years	Number of Students on Roll	285
Number of Caymanian Students	237	Number of Students with ALSN & SEND	136
Number of Teaching Staff	14	Number of Support Staff	12

WHAT THE SCHOOL DOES WELL

- Strong leadership at senior and middle levels had led to improvements in attainment and progress in Reception and science and student progress in mathematics.
- The engaging curriculum, effective teaching and meticulous progress monitoring provided children in Reception classes with a confident and positive start to their education.
- The supportive and caring ethos of the school fostered a culture of respect. Positive behaviour management enabled almost all students to behave well and to participate fully in learning activities.
- The innovative curriculum ensured continuity and reflected Caymanian culture, helping students to make connections between subjects, making learning more meaningful and promoting critical thinking.
- The school's commitment to students' holistic development ensured that they receive good support and guidance in all aspects of school life.

OVERALL JUDGEMENT



Satisfactory

Excellent

Exceptionally high quality of performance or practice

Good

The expected level for every school in the Cayman Islands, both government and private

Satisfactory

The minimum level of quality required for the Cayman Islands. All key aspects of performance and practice in every school should meet or exceed this level.

Weak

Quality not yet at the level acceptable for schools in the Cayman Islands. Schools will be expected to take urgent measures to improve the quality of any aspect of their performance or practice judged at this level.



AREAS FOR DEVELOPMENT

Improve the quality and consistency of teaching to raise attainment, particularly in English, by

- providing clear guidance to students on what they are learning and why in all lessons.
- maintaining an appropriate pace in lessons to enable students to make the progress they are capable of.
- improving the use of questioning to provide more opportunities for critical thinking.
- ensuring that teachers adapt their teaching to meet the needs of all students.
- embedding best practice in all lessons by ensuring all teachers understand how to implement techniques and strategies.

Improve assessment by

- making better and more consistent use of all available assessment data to inform teachers' planning.
- finding more effective ways of giving feedback to students and providing opportunities for students to respond and improve their work.
- Providing students with more opportunities to assess their own work or that of their peers.



INSPECTION FINDINGS

Quality Indicator		Early Childhood Judgement	Change	Quality Indicator		Primary Judgement	Change
Cognitive development	1.1 Attainment	Good	N/A	English	1.1 Attainment	Satisfactory	↑
	1.2 Progress	Excellent	N/A		1.2 Progress	Satisfactory	→
Social Emotional development	1.1 Attainment	Good	N/A	Mathematics	1.1 Attainment	Satisfactory	→
	1.2 Progress	Excellent	N/A		1.2 Progress	Good	↑
Communication and Language development	1.1 Attainment	Good	N/A	Science	1.1 Attainment	Good	↑
	1.2 Progress	Excellent	N/A		1.2 Progress	Good	↑
Physical development	1.1 Attainment	Excellent	N/A				
	1.2 Progress	Excellent	N/A				

Quality Indicator	Early Childhood Judgement	Change	Primary Judgement	Change
2.1 Social emotional learning/Positive behaviour	Excellent	↑	Good	→
2.2 Civic and environmental understanding	Excellent	↑	Good	→
3.1 Teaching	Good	↑	Satisfactory	→
3.2 Learning	Good	↑	Satisfactory	→
3.3 Assessment	Good	↑	Satisfactory	→
4.1 Curriculum quality	Good	↑	Good	↑
5.1 Health and safety	Good	→	Good	→
5.2 Support and guidance	Good	↑	Good	↑
6.1 Leadership	Whole School Judgement: Good		Change: ↑	
6.2 Self-evaluation and improvement planning	Whole School Judgement: Good		Change: ↑	
6.3 Links with parents and the community	Whole School Judgement: Good		Change: ↑	
6.4 Staffing and the learning environment	Whole School Judgement: Good		Change: →	



Click **HERE** to access the full inspection report for this school or visit www.oes.gov.ky.

