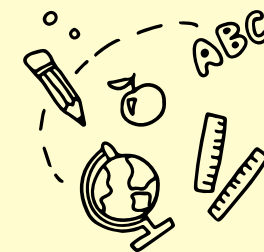




Office of Education
Standards
Cayman Islands Government

Summary Inspection Report

Quality Child Care PreSchool



SETTING INFORMATION

Inspection Dates	10 to 11 March, 2025		
Setting Leadership	Ms. Sandra Duncan-Roach		
Owner	Mr. Robert Lee Jackson		
Age Range of Children	18 months to 5 years old	Number of Children on Roll	59
Number of Caymanian Children	45	Number of Children with ALSN & SEND	14
Number of Licensed Teachers	1	Number of Other Staff	9

WHAT THE SETTING DOES WELL

- The curriculum was enhanced to be broad, well-balanced and enriching for all learners.
- The setting had established meaningful links with parents and the community, fostering collaboration to support children's development.
- The setting was inclusive, with well-structured systems in place to support children with Additional Learning Support Needs (ALSN), enabling them to learn alongside their peers.

OVERALL JUDGEMENT



Satisfactory

Excellent

Exceptionally high quality of performance or practice

Good

The expected level for every school in the Cayman Islands, both government and private

Satisfactory

The minimum level of quality required for the Cayman Islands. All key aspects of performance and practice in every school should meet or exceed this level.

Weak

Quality not yet at the level acceptable for schools in the Cayman Islands. Schools will be expected to take urgent measures to improve the quality of any aspect of their performance or practice judged at this level.

AREAS FOR DEVELOPMENT

1. Improve self-evaluation and improvement planning systems to ensure the setting's work is strategically planned and its impact on children's outcomes is regularly evaluated for continuous improvement.
2. Develop a strong and effective model of distributed leadership that empowers staff and enhances overall management of the centre.
3. Maintain consistently high-quality teaching across the setting to support good learning and development for all children.



INSPECTION FINDINGS

Quality Indicator		Judgement	Change
Cognitive development	1.1 Attainment	Satisfactory	N/A
	1.2 Progress	Satisfactory	N/A
Social Emotional development	1.1 Attainment	Satisfactory	N/A
	1.2 Progress	Satisfactory	N/A
Communication and Language development	1.1 Attainment	Satisfactory	N/A
	1.2 Progress	Satisfactory	N/A
Physical development	1.1 Attainment	Good	N/A
	1.2 Progress	Good	N/A
2.1 Social emotional learning		Satisfactory	N/A
2.2 Understanding of and appreciation for culture, religion and the environment		Good	N/A
3.1 Teaching		Satisfactory	→
3.2 Learning		Satisfactory	→
3.3 Observation, assessment and planning		Satisfactory	→
4.1 Curriculum quality		Good	↑
5.1 Health and safety		Satisfactory	→
5.2 Support and guidance		Good	↑
6.1 Leadership		Satisfactory	↓
6.2 Self-evaluation and improvement planning		Weak	↓
6.3 Links with parents and the community		Good	→
6.4 Staffing and the learning environment		Satisfactory	→



Click **HERE** to access the full inspection report for this school or visit www.oes.gov.ky.

