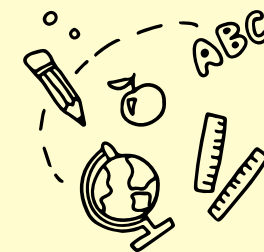




Office of Education  
Standards  
Cayman Islands Government

# Summary Inspection Report

## Shining Stars Childhood Care and Education Centre



### SETTING INFORMATION

Inspection Dates	18 - 19 February, 2025		
Setting Leadership	Owner: Mr. Robert Stuart		
	Manager/Principal: Dr. Nimfa De Veyra		
Age Range of Children	1 Year old to 5 Years	Number of Children on Roll	78
Number of Caymanian Children	41	Number of Children with ALSN & SEND	9
Number of Licensed Teachers	2	Number of Other Staff	13

### WHAT THE SETTING DOES WELL

- Almost all children had a positive sense of self and they were confident and secure as the relationships between adults and children were positive and nurturing.
- Children's achievement and progress in physical development and social and emotional learning were judged as good.
- The setting had strong links with parents and the community.

### OVERALL JUDGEMENT



**Weak**

#### Excellent

Exceptionally high quality of performance or practice

#### Good

The expected level for every school in the Cayman Islands, both government and private

#### Satisfactory

The minimum level of quality required for the Cayman Islands. All key aspects of performance and practice in every school should meet or exceed this level.

#### Weak

Quality not yet at the level acceptable for schools in the Cayman Islands. Schools will be expected to take urgent measures to improve the quality of any aspect of their performance or practice judged at this level.

### AREAS FOR DEVELOPMENT

1. Take urgent steps to improve health and safety practices and procedures to ensure full compliance with all regulatory requirements and to embed a culture of safety across the setting.
2. Enhance self-evaluation and improvement planning processes to drive continuous development and effectiveness.
3. Ensure consistently high-quality teaching across the setting by:
  - a) Implementing effective performance management systems to support staff development.
  - b) Providing consistent and impactful leadership support to enhance learning environments and resources both indoors and outdoors.
  - c) Ensuring teachers use accurate assessment data to inform planning to meet the needs of individual learners.



## INSPECTION FINDINGS

Quality Indicator		Judgement	Change
Cognitive development	1.1 Attainment	Satisfactory	N/A
	1.2 Progress	Satisfactory	N/A
Social Emotional development	1.1 Attainment	Satisfactory	N/A
	1.2 Progress	Satisfactory	N/A
Communication and Language development	1.1 Attainment	Satisfactory	N/A
	1.2 Progress	Satisfactory	N/A
Physical development	1.1 Attainment	Good	N/A
	1.2 Progress	Good	N/A
2.1 Social emotional learning		Good	N/A
2.2 Understanding of and appreciation for culture, religion and the environment		Satisfactory	N/A
3.1 Teaching		Satisfactory	→
3.2 Learning		Satisfactory	↓
3.3 Observation, assessment and planning		Satisfactory	→
4.1 Curriculum quality		Satisfactory	→
5.1 Health and safety		Weak	↓
5.2 Support and guidance		Satisfactory	→
6.1 Leadership		Satisfactory	→
6.2 Self-evaluation and improvement planning		Weak	↓
6.3 Links with parents and the community		Good	→
6.4 Staffing and the learning environment		Satisfactory	→



Click **HERE** to access the full inspection report for this school or visit [www.oes.gov.ky](http://www.oes.gov.ky).

