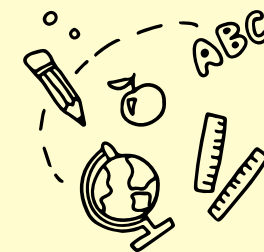




Summary Inspection Report

East End Primary School



SCHOOL INFORMATION

Inspection Dates	7 to 9 October, 2024		
Principal	Dr. O'Neil Duncan		
Age Range of Students	3 - 11 years	Number of Students on Roll	110
Number of Caymanian Students	95	Number of Students with ALSN & SEND	32
Number of Teaching Staff	9	Number of Support Staff	9

WHAT THE SCHOOL DOES WELL

- School leaders had successfully improved many aspects of the school since the previous inspection. For instance, in English, students' progress over time and their overall attainment had improved
- Students behaved well, were keen to learn and were respectful to their peers and adults.
- Staff across the school provided effective support and guidance to students, including those with SEN, and actively promoted their well-being.
- The school's involvement with the local community had a positive impact on the community and enriched students' learning.
- The Nursery had a positive impact on starting points for children in Reception and provided an invaluable resource for parents in the local community.

AREAS FOR DEVELOPMENT

- Improve students' attainment and progress, in all subjects, but particularly in mathematics, by:
 - o ensuring that teachers use assessment information to plan lessons and tasks that build on the prior attainment of students;
 - o reviewing curriculum plans so that they meet the needs of all students;
 - o planning challenging tasks so that students can deepen their knowledge and more students can make better than expected progress;
 - o planning regular opportunities for students to check their own learning and improve their work.
- Improve teaching by:
 - o ensuring teachers manage time well and use resources effectively to maximise students' progress towards learning objectives;
 - o improving teachers' ability to adapt their lessons to help students achieve or exceed the learning objective;
 - o refining the monitoring of teaching practices and the use of resources to better assess their impact on students' progress;
 - o supporting all middle leaders, including those new to their roles, to focus on raising attainment and progress in lessons.

OVERALL JUDGEMENT



Satisfactory

Excellent

Exceptionally high quality of performance or practice

Good

The expected level for every school in the Cayman Islands, both government and private

Satisfactory

The minimum level of quality required for the Cayman Islands. All key aspects of performance and practice in every school should meet or exceed this level.

Weak

Quality not yet at the level acceptable for schools in the Cayman Islands. Schools will be expected to take urgent measures to improve the quality of any aspect of their performance or practice judged at this level.



INSPECTION FINDINGS

Quality Indicator		Early Childhood Judgement	Change	Quality Indicator		Primary Judgement	Change
Cognitive development	1.1 Attainment	Good	N/A	English	1.1 Attainment	Satisfactory	↑
	1.2 Progress	Good	N/A		1.2 Progress	Satisfactory	→
Social Emotional development	1.1 Attainment	Good	N/A	Mathematics	1.1 Attainment	Weak	→
	1.2 Progress	Good	N/A		1.2 Progress	Satisfactory	→
Communication and Language development	1.1 Attainment	Good	N/A	Science	1.1 Attainment	Satisfactory	→
	1.2 Progress	Good	N/A		1.2 Progress	Satisfactory	→
Physical development	1.1 Attainment	Good	N/A				
	1.2 Progress	Good	N/A				

Quality Indicator	Early Childhood Judgement	Change	Primary Judgement	Change
2.1 Social emotional learning/Positive behaviour	Good	→	Good	→
2.2 Civic and environmental understanding	Good	→	Good	→
3.1 Teaching	Good	→	Satisfactory	→
3.2 Learning	Good	→	Satisfactory	→
3.3 Assessment	Good	→	Satisfactory	→
4.1 Curriculum quality	Good	→	Good	↑
5.1 Health and safety	Good	→	Good	→
5.2 Support and guidance	Good	→	Good	↑
6.1 Leadership	Whole School Judgement: Good		Change: →	
6.2 Self-evaluation and improvement planning	Whole School Judgement: Good		Change: →	
6.3 Links with parents and the community	Whole School Judgement: Excellent		Change: ↑	
6.4 Staffing and the learning environment	Whole School Judgement: Satisfactory		Change: →	



Click **HERE** to access the full inspection report for this school or visit www.oes.gov.ky.

